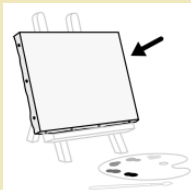


La Reina María Luisa de Parma

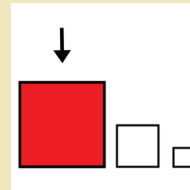
CLASIFICACIÓN  
PINTURA DE CABALLETE. RETRATOS



**ÓLEO SOBRE LIENZO**



**CUADRO**



**GRANDE**



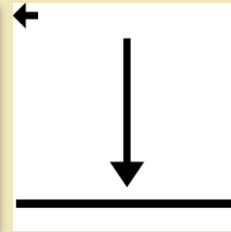
**COLECCIÓN IBERCAJA**



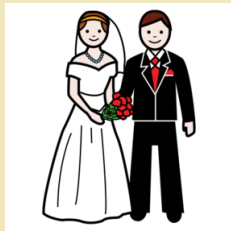
**PINTADO POR FRANCISCO DE GOYA**



APRENDEMOS



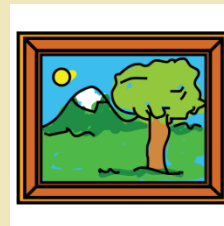
**CARLOS IV ERA REY DE ESPAÑA.**



**MARIA LUISA ESTABA CASADA CON CARLOS IV.**



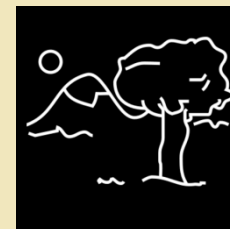
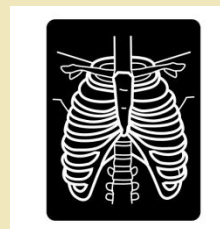
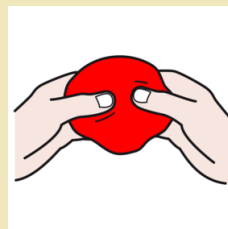
APRENDEMOS



LOS INVESTIGADORES NO SABÍAN SI GOYA PINTÓ ELCUADRO.



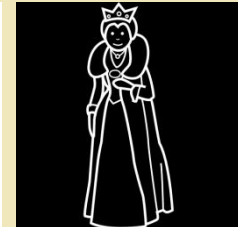
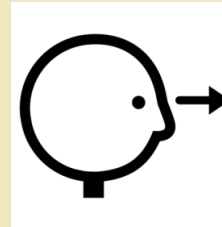
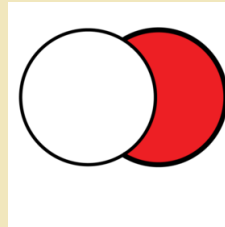
LOS INVESTIGADORES DEL MUSEO DEL PRADO



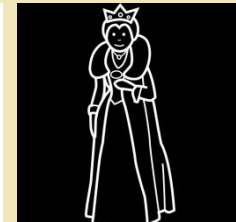
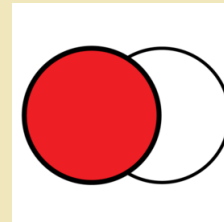
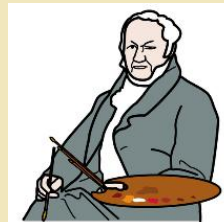
HICIERON UNA RADIOGRAFÍA AL CUADRO.



APRENDEMOS



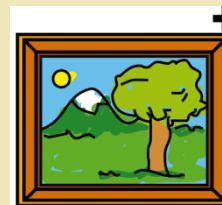
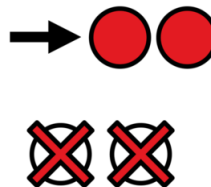
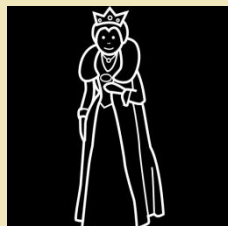
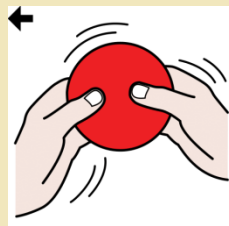
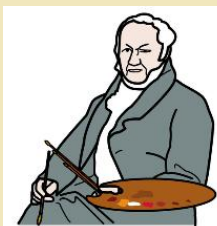
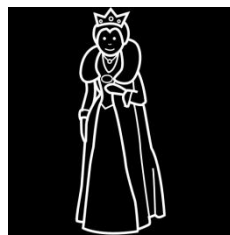
**DETRÁS DEL CUADRO ENCONTRARON OTRO RETRATO.**



**GOYA PINTÓ ENCIMA DEL RETRATO.**



APRENDEMOS



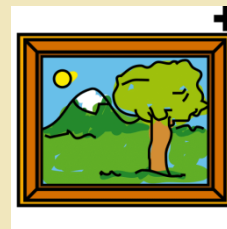
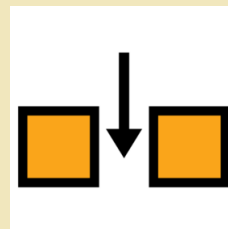
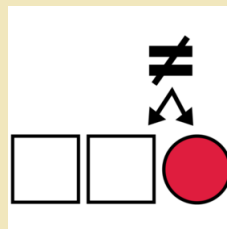
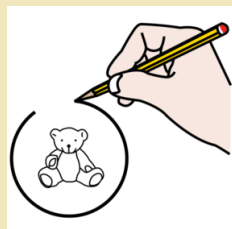
GOYA USÓ EL RETRATO EN OTROS CUADROS DE MARIA LUISA.



APRENDEMOS



**¿QUIERES INVESTIGAR TÚ TAMBIÉN?**



**RODEA DE ROJO LAS 4 DIFERENCIAS ENTRE LOS DOS CUADROS.**

# AQUÍ TIENES LAS CUATRO DIFERENCIAS.

